

CORDLESS ENDO MOTOR

CanalPro X-Move

Full Freedom of Movement





CanalPro X-Move

The wireless CanalPro X-Move endomotor provides two movement modes, a full rotating and a reciprocation motion for all common file systems. The motor stands for simple handling and great flexibility.

Features & Benefits

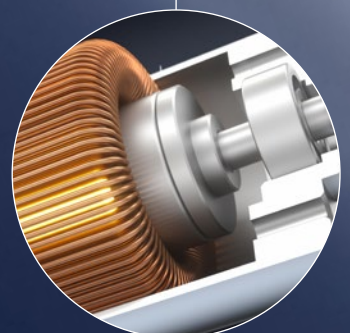
- Continuous rotation and a reciprocation motion for all common file systems
- Wireless endomotor for easy and flexible operation
- Integrated apex locator for safe and efficient treatments
- Insulated contra angle with super mini-head and slim neck provides convenient usage and free field of view
- Intuitive control display for easy handling
- Pre-programmed settings for COLTENE file systems saves preparation time



Normal contra angle head & neck

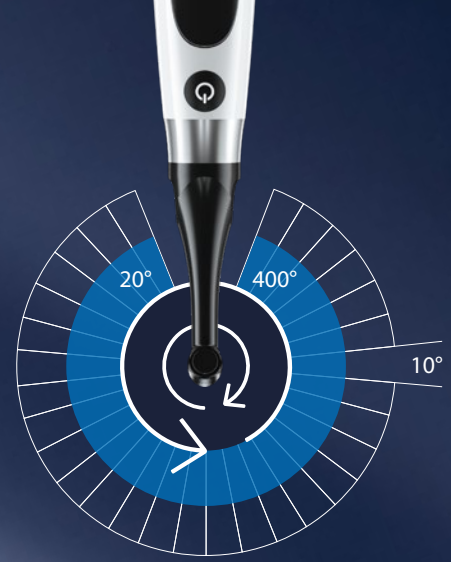


CanalPro X-Move contra angle super mini-head & slim neck



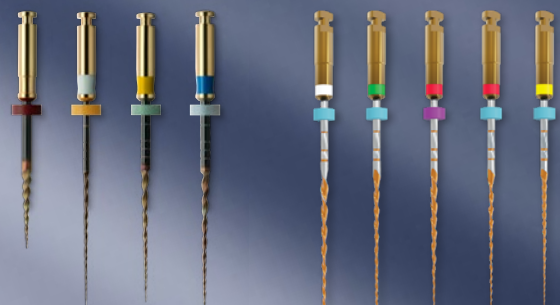
Technical Specifications

- Contra angle: 360 degrees rotation
- Torque range: 0.4 – 5.0 Ncm
- Speed range: 100 – 2500 rpm
- Adjustable reciprocating angle: 10° interval
- Adjustment range 20°–400°
- Mini insulated contra angle with diameter of 8 mm and a height of 9.7 mm



User Menu

- Pre-programmed settings for HyFlex EDM, HyFlex EDM OGSF Sequence, HyFlex CM, MicroMega One Flare, MicroMega One G, MicroMega One Curve mini, MicroMega One RECI, MicroMega 2Shape mini, Remover for HyFlex and MicroMega systems
- Included option to manually set parameters (RPM, torque, angles) for other files systems



HyFlex EDM OGSF

MicroMega One RECI

The Motor – stronger power, lower noise

- Adjustable reciprocation angles for higher preparation efficiency
- Lower noise levels due to smooth rotation provides higher treatment comfort
- High performance brushless motor
- Control display for easy handling

Technical and settings data of all COLTENE files:



Order Information

CanalPro X-Move Box

- 65002739** 1 × Motor Handpiece
- 1 × Charging Base
- 1 × Contra Angle
- 1 × Spray Nozzle
- 1 × Measuring Wire
- 4 × File Holder
- 2 × Lip Clip
- 2 × Touch Probe
- 2 × "O" ring
- 1 × Power Adapter
- 1 × Battery

Accessories

- 65002742** 1 × Motor Handpiece
- 65002743** 1 × Charging Base
- 65002744** 1 × Contra Angle
- 65002745** 1 × Spray Nozzle
- 65002746** 1 × Power Adapter
- 65002747** 1 × Measuring Wire
- 65002748** 4 × File Holder
- 65002749** 2 × Lip Clip
- 65002750** 2 × Touch Probe
- 65002751** 2 × "O" ring
- 65002752** 1 × Battery

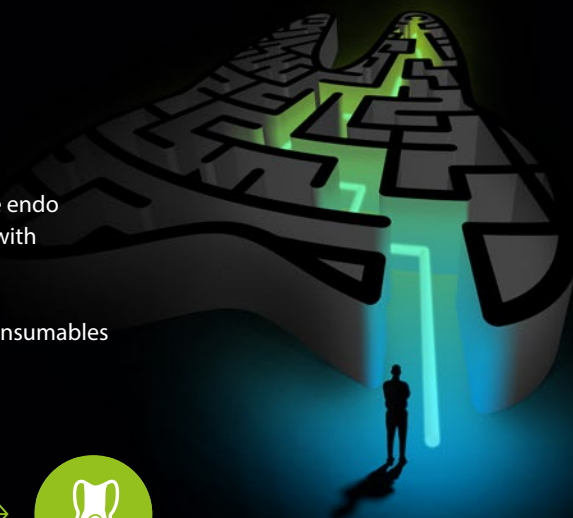


Your Endo Guide

Practical. Innovative. Leading the way.

COLTENE provides simple, safe, and efficient solutions for every step of the endo process, carefully guiding the dentist through every endodontic situation with dedicated trainings and experienced endo consultants.

Our portfolio, which has been refined over decades, includes innovative consumables and sophisticated equipment that reliably cover all five treatment steps.



© COLTENE – www.coltene.com



Imprint / Publisher

Coltène/Whaledent AG
 Feldwiesenstrasse 20
 CH-9450 Altstätten
 +41 71 757 5300
info.ch@coltene.com

Sales Contact

Coltène/Whaledent Ltd.
 The President Suite
 Kendal House, Victoria Way
 Burgess Hill, West Sussex
 RH15 9NF/UK
 +44 1444 235486
info.uk@coltene.com

Service Center

service@coltene.com
 00 800 11 0000 12 (UJFN)
 Mon.-Fri. 8:00 to 17:00 MESZ

